

# walk through my archive



a previous project  
on wear and tear in  
cityscapes



daily observations  
of wear and tear

my notes on  
daily movements



speculative poems  
on wear and tear



white lines freckled  
with footsteps  
and tire tracks

rained wet  
then dried to crackle  
chips kicked up  
then rolled down



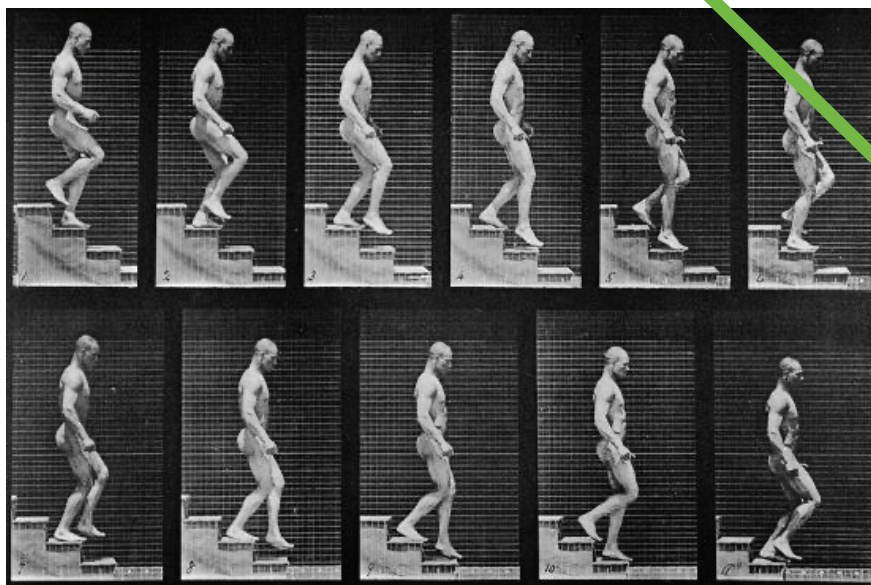
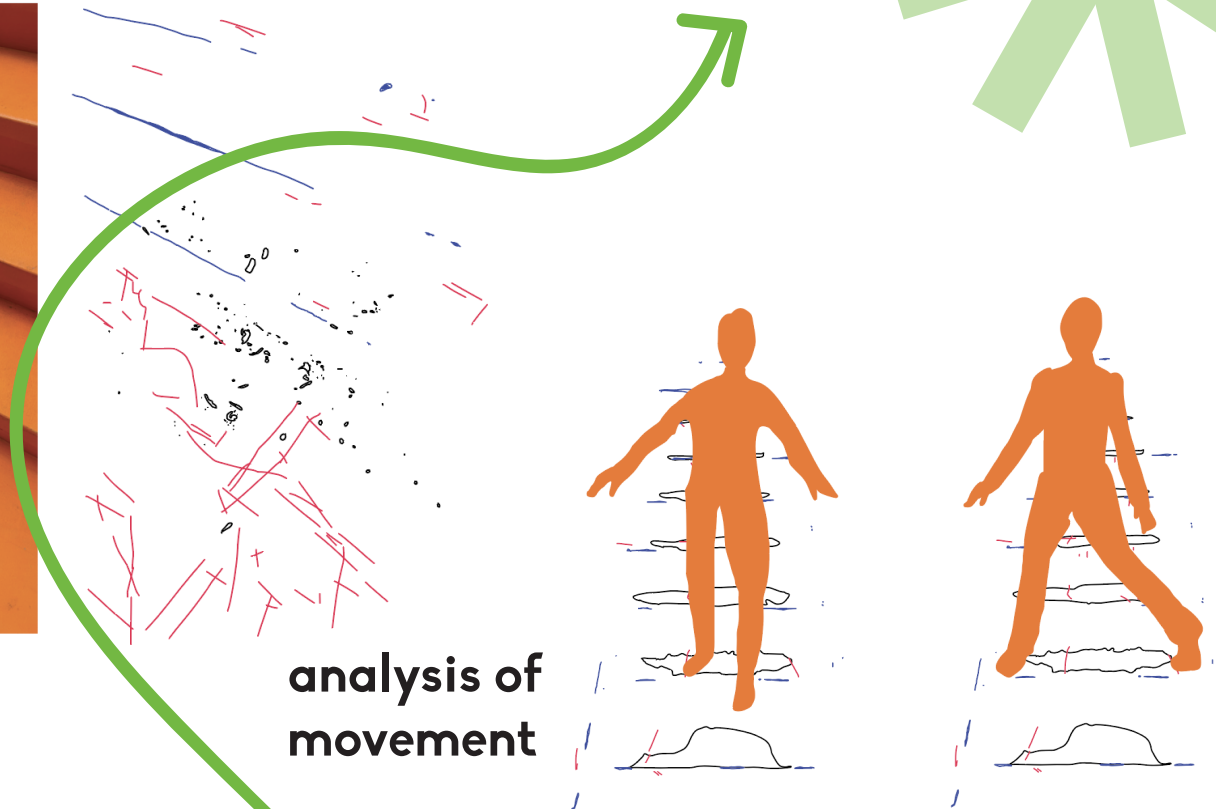
analysis of  
the space



intervention 1

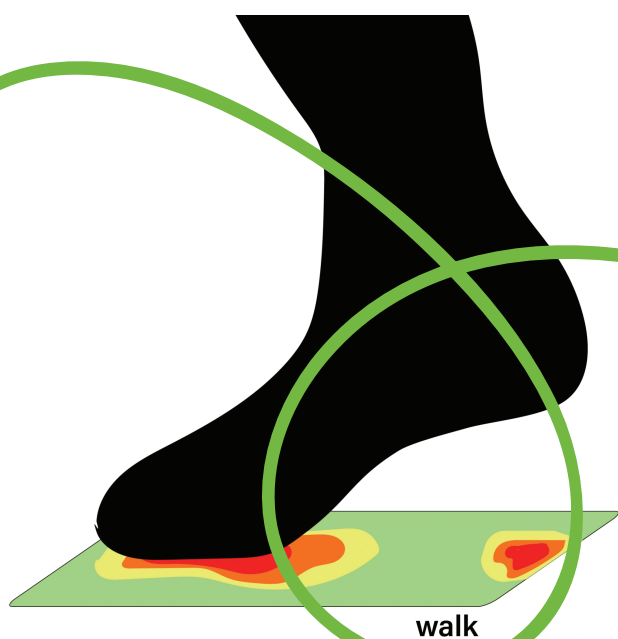


analysis of  
movement



eadweard muybridge as a  
reference on general movement

writing scores on  
movement alongside  
wear and tear



speculative illustrations  
on types of movements

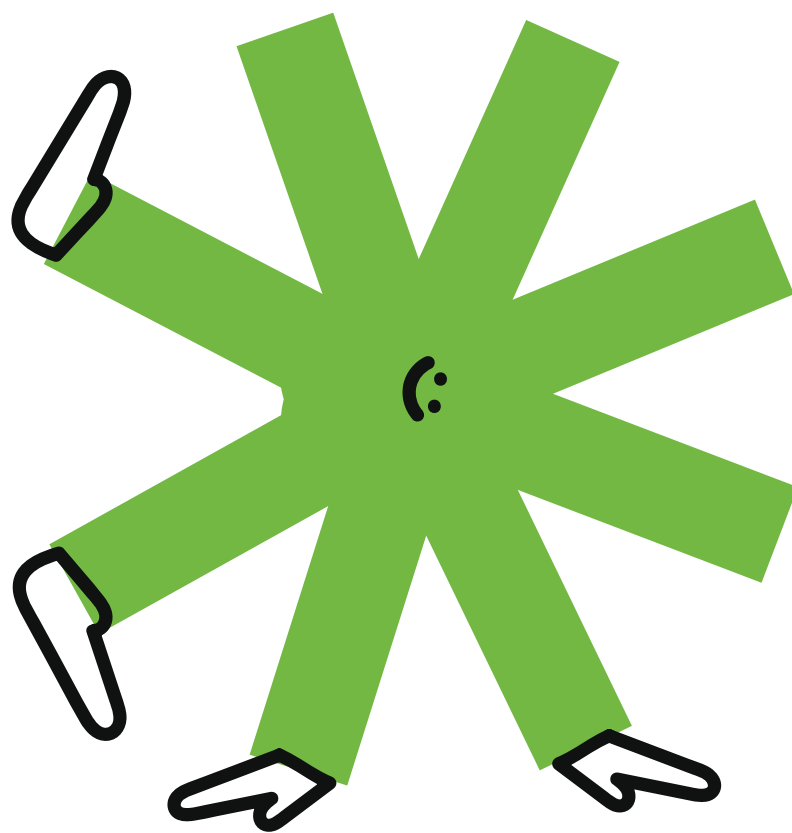


erosion on stairs  
collection of images  
collected & made

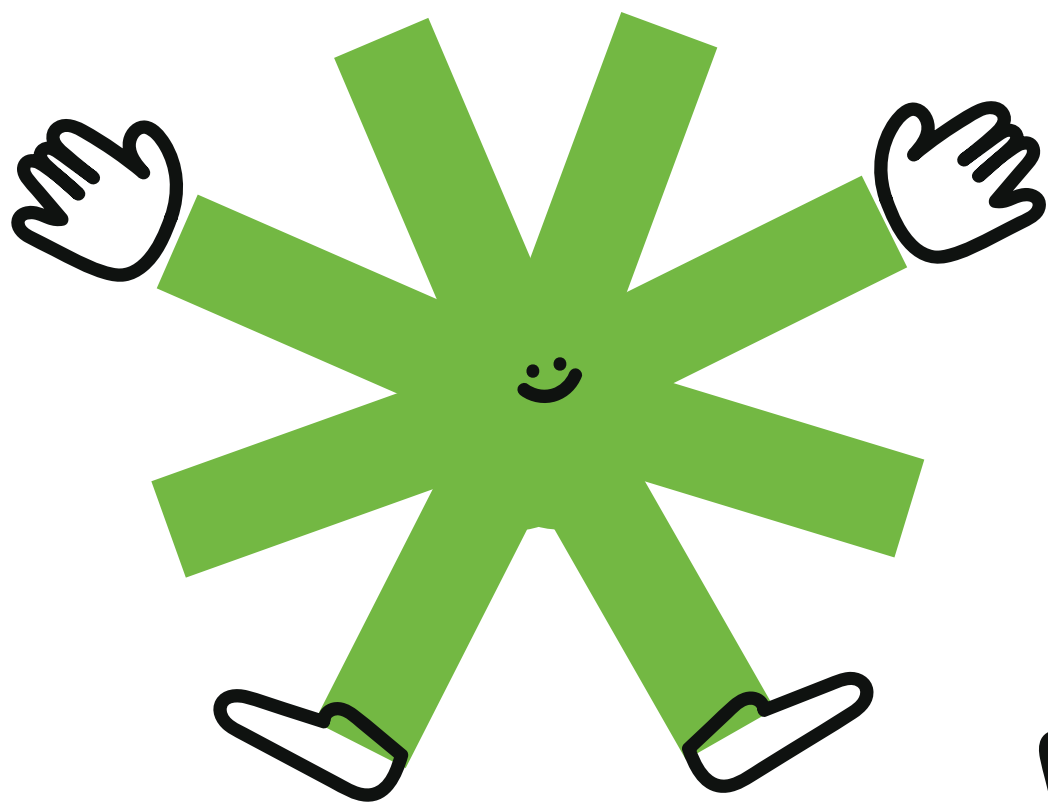




**what**



**is**



**choreo  
graphing**



**us?**



**wear and tear  
as**

**an indication for  
a method of,  
or an instruction into  
movement**



**to inspect &  
speculate towards  
engaging movement  
or avoidant movement**



2 teams  
2 dice each  
take turns  
use the space

i avoid



i engage







**mimic**



**pause  
on**



**march  
on**



**point  
at**



**trace**



**balance  
on**





**circle**



**tiptoe  
past**



**jump  
over**



**look  
away  
from**



**step  
over**



**skirt  
edges  
of**

# concepts for intervention 2

## footwear

Inspired by ice-shoes or football-shoes, people walking a specific set of stairs will be given unconventional footwear that actively wears the stairs down in different ways than usual. Paper will be laid on the stairs to track the wear and tear more closely.

## avoidant paths

perhaps based on a score: people walking the stairs will always choose the most unbeaten path - the least amount of wear and tear to walk down or up a staircase - so that the wear and tear evens out over time.

## wear and tear stacked

Every time some sort of wear and tear is created, a flat object will cover it, like a metal sheet or a bit of plywood. Once the cover receives a scuff mark, the same thing happens. The stack becomes a clear mark of engagement, but will likely cause people to avoid it as it becomes too tall to walk on.

## added textures

a staircase will be reshaped by added textures. A soft cushion implicates seats, or perhaps a bed, and is harder to walk on - a sheet of plastic will be too slippery - how do these textures influence the use of the stairs?







**a  
scratch**



**chipped  
paint**



**a scuff  
mark**



**a  
dent**



**dis  
color-  
ation**



**some-  
thing  
un-  
touched**

**a  
scratch**

**chipped  
paint**

**a scuff  
mark**

**a  
dent**

**dis  
color-  
ation**

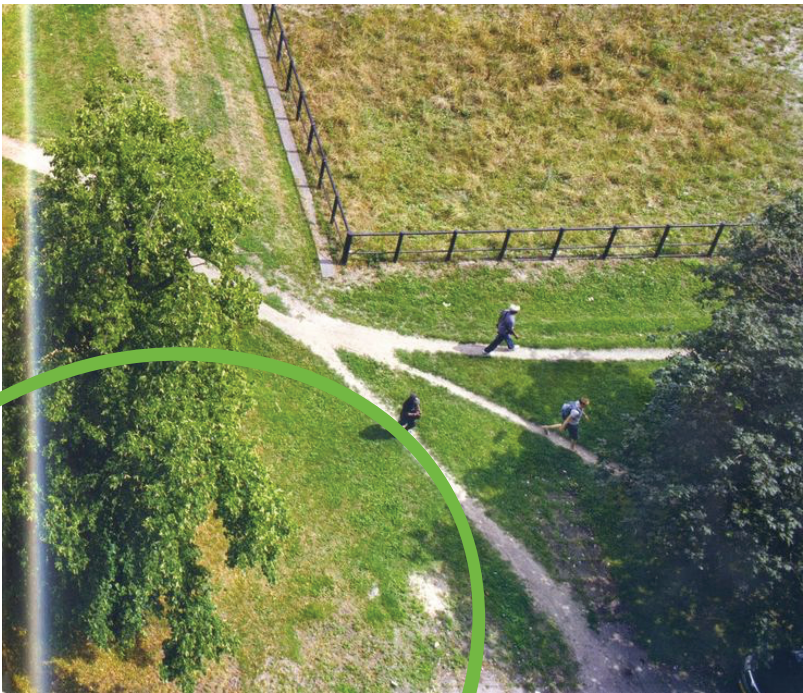
**some-  
thing  
un-  
touched**



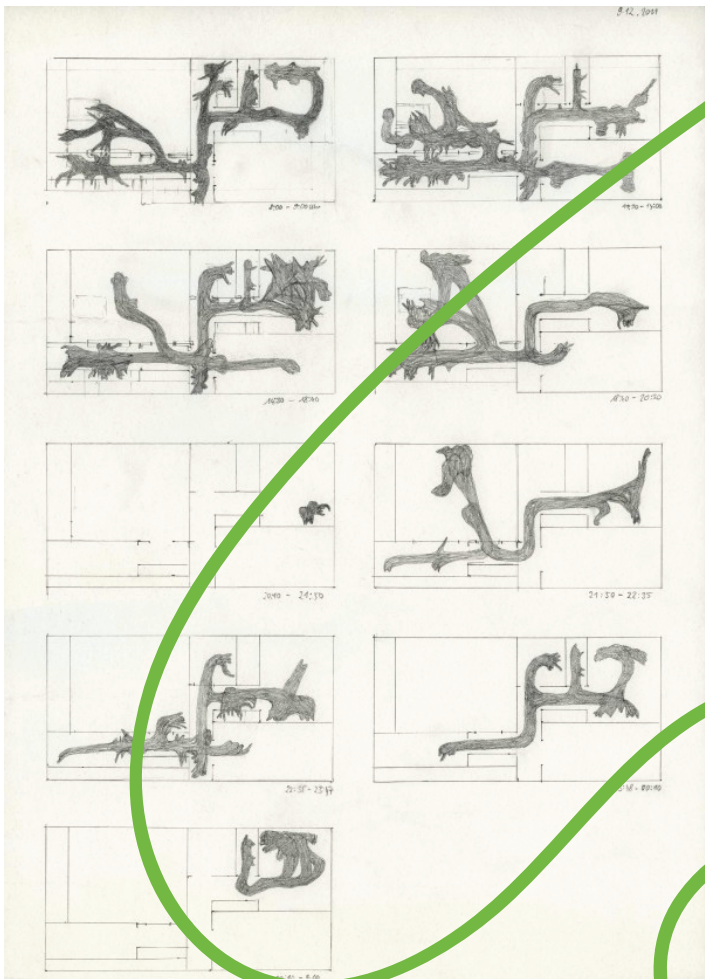
# walk through my archive



a collection of  
images of explicit  
and suggestive  
instructions



a collection of  
images of desire  
paths



invisible  
movement by  
Simone Reuss

a field guide  
to iLANDing

Interdisciplinary Laboratory for Art Nature and Dance

a FIELD  
GUIDE to  
iLANDing



scores for researching urban ecologies



# intervention 2 concepts

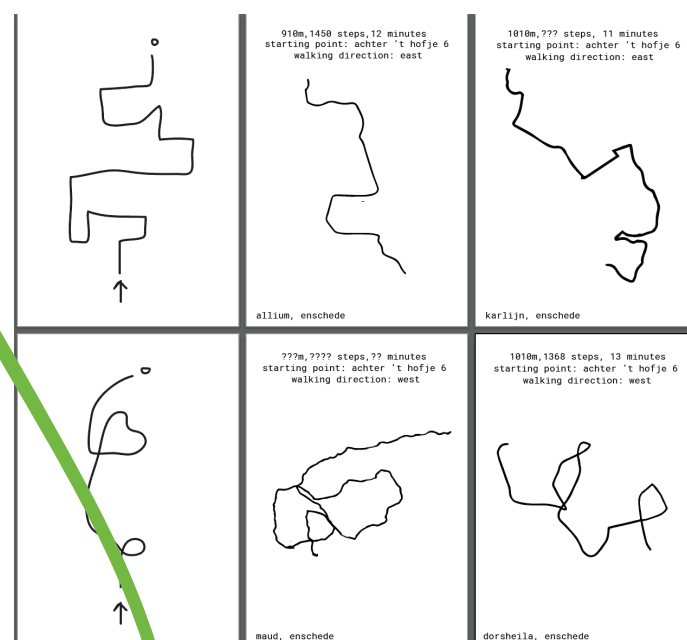
a collection of  
written scores based  
on wear and tear



oliafur eliasson  
waterfall



intuition maps  
by beccy mccray



line maps  
experiment for case



A black and white photograph of a city sidewalk. The sidewalk is made of rectangular paving stones, some of which are worn and stained. In the foreground, there is a metal grate with a diamond pattern. Several pairs of legs and feet are visible, walking across the sidewalk, leaving behind numerous footprints. A large, bright green asterisk graphic is overlaid on the right side of the image, partially obscuring the text.

an archive of  
wear and tear  
by allium

what is  
choreographing us?